





MIM es utilizado por 18 de los 20 centros líderes de cáncer en el mundo



Sobre MIM

- Más de 20 años de trayectoria en soluciones para medicina nuclear
- Oficinas en USA, Europa y Asia
- 240+ empleados, 4000+ clientes



MOLECULAR IMAGING AND NUCLEAR MEDICINE

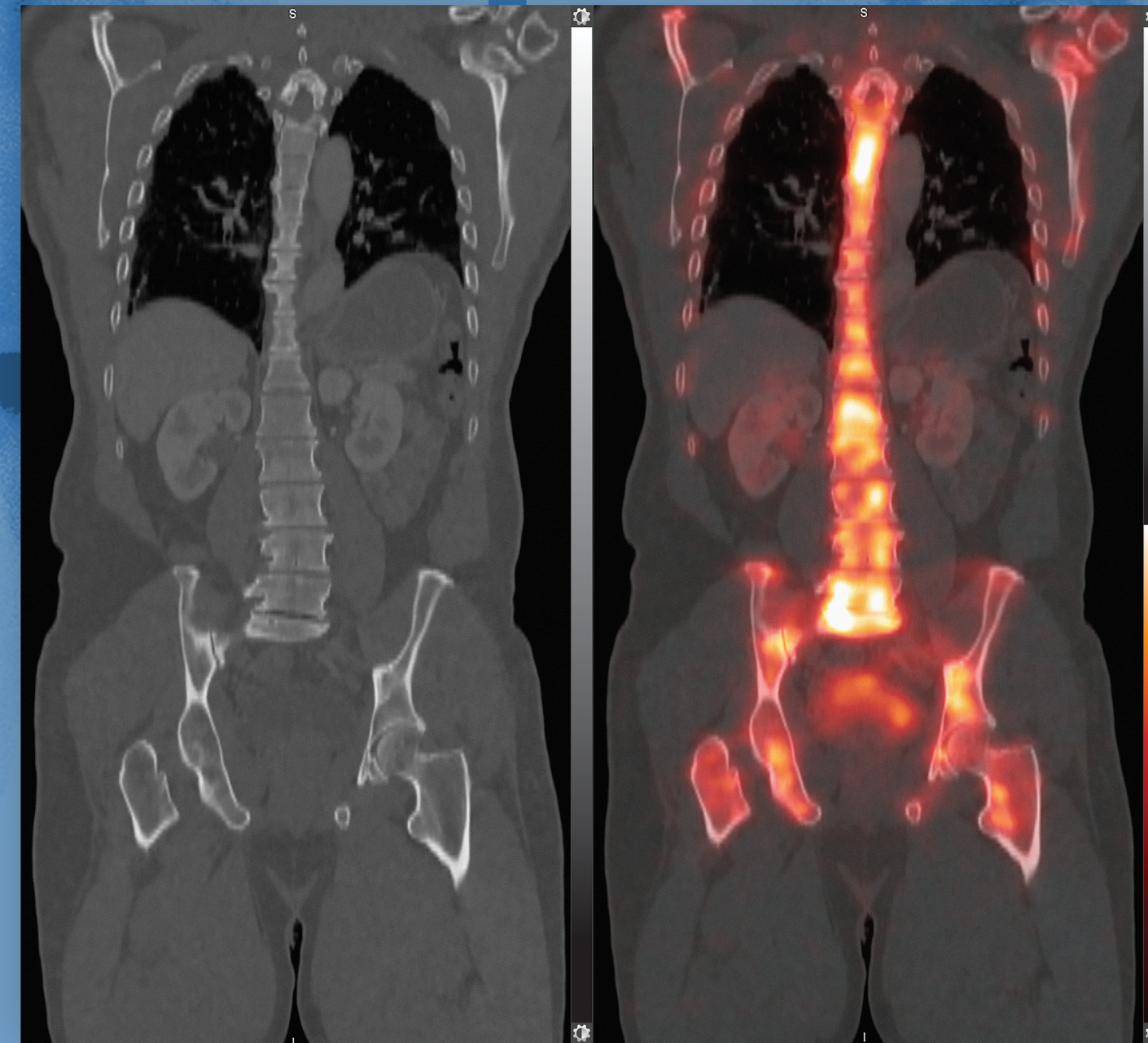
Diagnostic Solutions

MIM Encore

Streamline your Workflow

- Visualización
- Cuantificación
- Reconstrucción

**Una sola Plataforma para PET/CT,
SPECT/CT, cuantificación avanzada y
visualización.**



CAMARA GAMMA

Lung VQ



Gastric Emptying

Liver Functional Analysis

MUGA



Colonic Transit

Renal MAG3

Small Bowel Transit

Parathyroid

Gallbladder EF

Lung Quantification

Renal DMSA

Liver Quantification



Liver Lung Shunt

MIM para procesamiento en medicina nuclear

- Un solo Sistema para todos los procesamientos, no importa la marca de los equipos.
- Estandarización y automatización de procesamientos.
- Generación de ROIs de forma automática y precisa.

Pacientes Sesiones

Visualizar Contornos Neuro Cardíaco Hallazgos

NM1 Frame 20 DEMO SPECT 3 FOVS FOV1 - Main Window (1st photopeak) - sing SPECT CT PSMA (FOV 1) ANON76153 2022-02-21 11:52:57	20 (de 36) SPECT CT PSMA (F Duración: 0:15 Tiempo: 4:45 U 0.74 cps L 0 cps 0.13 cps	NM1a Frame 20 DEMO SPECT 3 FOVS Lower Scatter Window (SPECT CT PSMA (FOV 1) ANON76153 2022-02-21 11:52:57	SPECTRA *Recon/Quant*: *insert isotope* Reconstruction (7.1.2+) SPECTRA *Recon/Q... Flujo de trabajo en progreso: SPECTRA *Recon/Quant*: *insert Paso 35 de 48 Iniciar flujo de trabajo Iniciar flujo de trabajo Paso 25 de 170 Iniciar flujo de trabajo Iniciar flujo de trabajo Paso 28 de 62 Iniciar flujo de trabajo para cada elemento Iniciar flujo de trabajo para cada elemento Paso 7 de 22 Ecuación matemática Pausar flujo de trabajo Cancelar flujo de trabajo
NM1b Frame 21 DEMO SPECT 3 FOVS FOV2 - Main Window (1st photopeak) - sing SPECT CT PSMA (FOV 2) ANON76153 2022-02-21 11:59:28	21 (de 36) SPECT CT PSMA (F Duración: 0:15 Tiempo: 5:00 U 2.32 cps L 0 cps 0 cps	NM1c Frame 20 DEMO SPECT 3 FOVS Lower Scatter Window (SPECT CT PSMA (FOV 2) ANON76153 2022-02-21 11:59:28	
NM1d Frame 21 DEMO SPECT 3 FOVS Main Window (140) SPECT CT PSMA (FOV 3) ANON76153 2022-02-21 12:06:22	21 (de 36) SPECT CT PSMA (F Duración: 0:15 Tiempo: 5:00 U 7.22 cps L 0 cps 0 cps	NM1e Frame 20 DEMO SPECT 3 FOVS FOV# - Non-Main Wind SPECT CT PSMA (FOV 3) ANON76153 2022-02-21 12:06:22	L 0 cps 0 cps

CT 563.6 mm 223

0.49 mm 0.49 mm

Serie CT1
 Nombre DEMO SPECT 3 FOVS
 Nombre del flujo de trabajo CT
 Modalidad CT
 Descripción de la serie CT SPECT CT PSMA
 ID del paciente ANON76153
 Tiempo de adquisición 2022-02-21 12:13:23
 Fecha del estudio 2022-02-21
 Unidades HU
 kVp 120.0 kV
 Exposición 1614 mAs
 Corriente 25 mA
 Tiempo de exposición 64590 ms
 Opciones de escaneo [HELICAL SCAN]
 Predefinido Predeterminado
 Ventana 400 HU
 Nivel 40 HU
 Gamma 1
 Valor en + -6 HU
 Ubicación 0.49, 0.49, 563.6 (dcm)

RECONSTRUCCIÓN SPECT MULTI-FOV EN SEGUNDOS

WORKFLOWS ESPECÍFICOS PARA NEUROLOGÍA Y CARDIOLOGÍA SPECT / PET

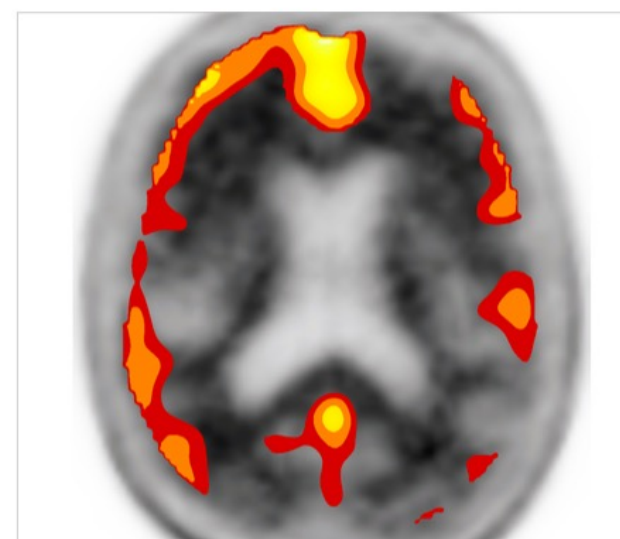
Specialized Neuro and Cardiac Quantitative Solutions

Comprehensive Neuroimaging Quantitation

MIMneuro® provides a single platform, vendor-neutral solution for image processing, reading, and reporting. Increase reader confidence with quantification by comparing to a normals database (**FDG, Amyloid, DaTscan, HMPAO, and more**). Image subtraction and dynamic neuroimaging quantification are also available.

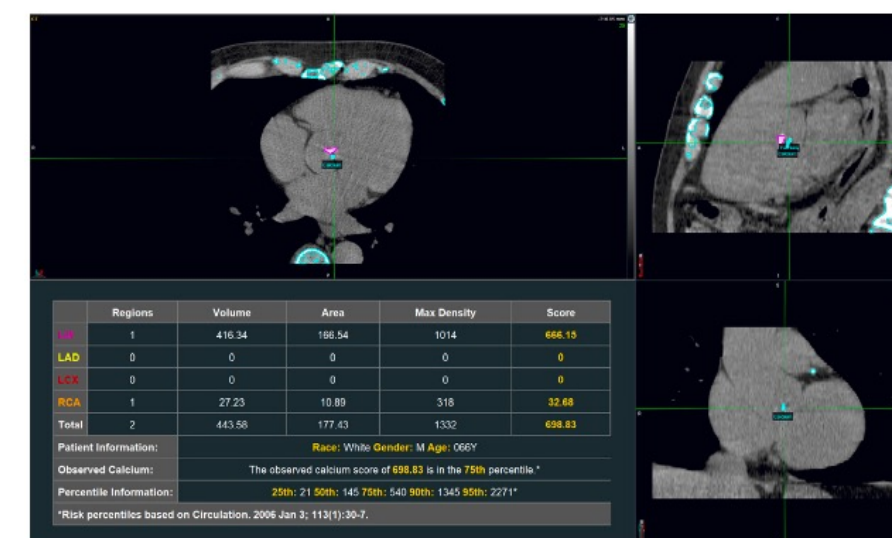
Increase Confidence with Cardiac Imaging Quantitation

MIMcardiac® includes reading workflows for viability, sarcoidosis, and stress/rest exams. The normals database available for quantitative comparison includes SPECT sestamibi. Quantitative options for **cardiac PET** and calcium scoring calculations* are included. MIM Software also supports integrations with both Cedars® and Invia® 4DM, allowing users to process, view, quantify, and report any Nuclear Cardiology study from within a single application.



Quantitative Image Analysis for Amyloid

MIMneuro includes voxel-based comparison to a normal database.



Calcium Scoring Support

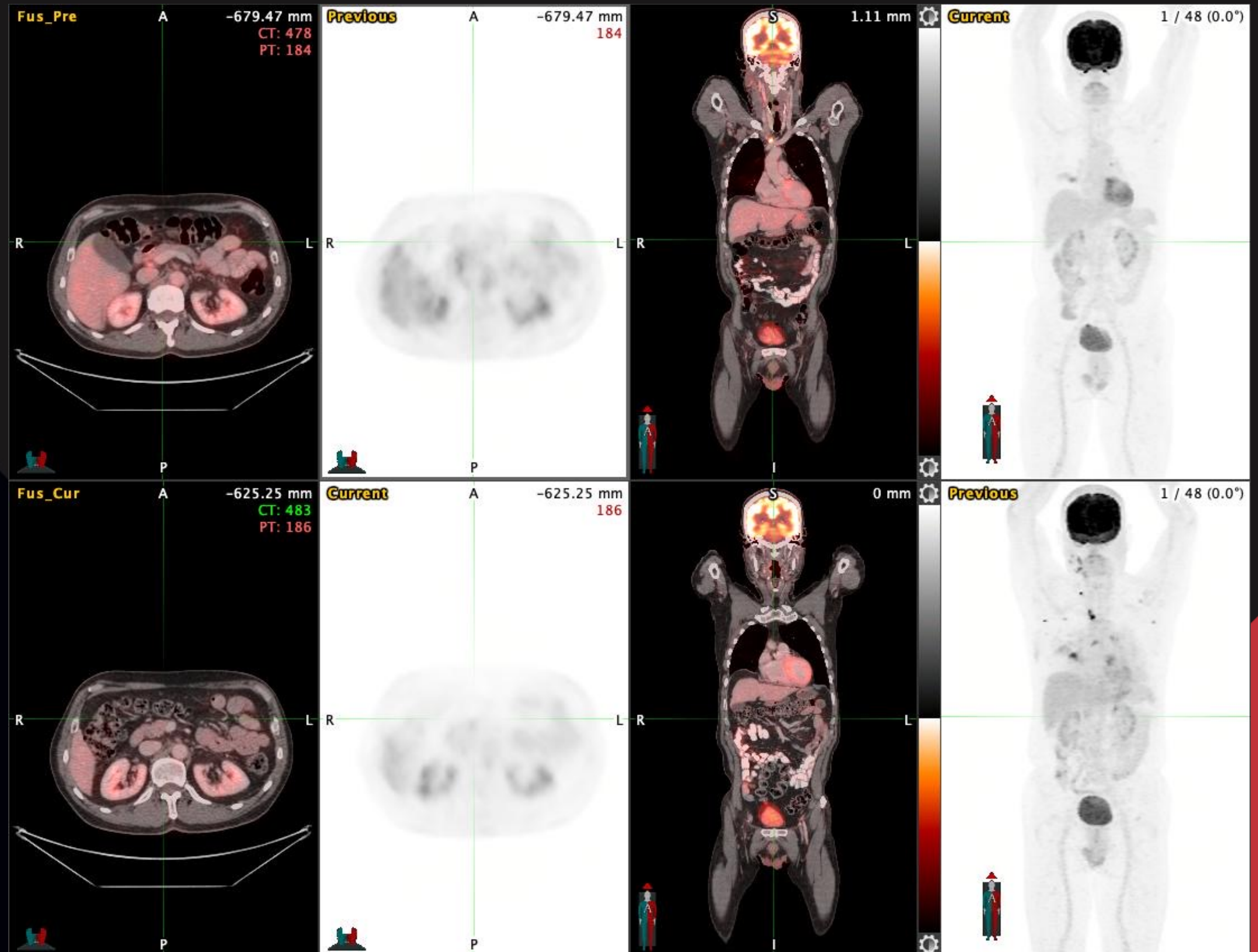
Calculating calcium scoring is fast and accurate with MIMcardiac.

*May not yet be commercially available in your territory.

Check with your MIM Software representative for more information.

PET / TC - RM

ESTUDIOS COMPARATIVOS EN SEGUNDOS

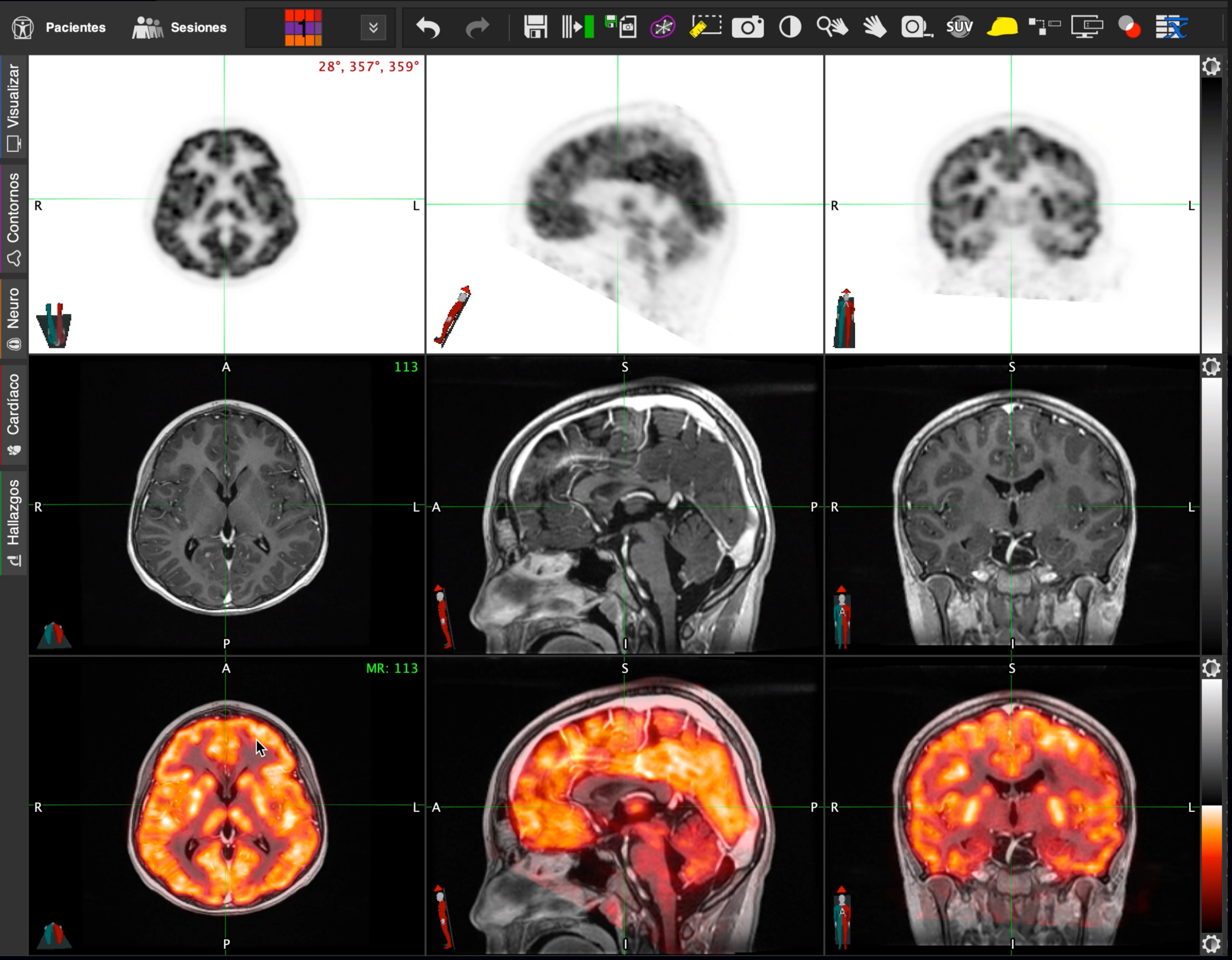




Total Tumor Burden Statistics		
	Baseline	Follow-Up #1
Volume (ml)	2355,28	300,81 (-87,23%)
TLG (SUV*ml)	19287,98	1820,28 (-90,56%)
SUVmax (SUV)	30,9	30,73 (-0,53%)
Uptake Time (min)	-	-
Ref Mean (SUV)	1,57	1,71 (+8,96%)
Lesion Cutoff Value (SUV)	3,15	3,03

LesionID™

**INTELIGENCIA
ARTIFICIAL EN
CALCULO DE
CARGA TUMORAL
(MTV / TLG) BASAL
Y DE SEGUIMIENTO**



**FUSIÓN
MULTIMODALIDAD
CON ALINEACIÓN
AUTOMÁTICA CON
UN SOLO CLICK**

ACCESO REMOTO CON FUNCIONALIDAD COMPLETA EN COMPUTADORAS PORTÁTILES

Remote Solutions and Integrations

Full Image Access Anywhere

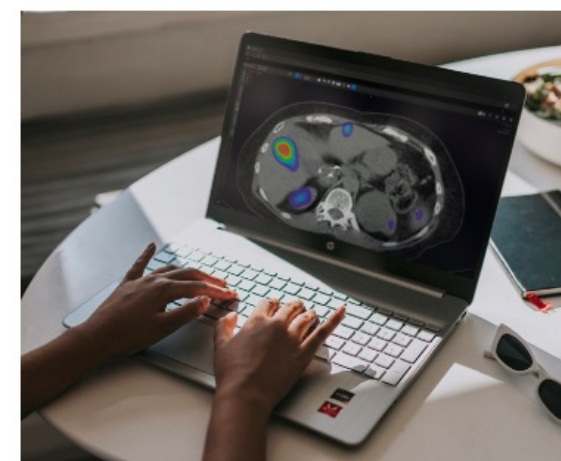
MIM Zero Footprint™ allows you to **securely access** all MIM Software products with the same licensed features you use in the clinic anywhere you have internet access. Unlike other products that often fail risk reviews, MIM Software takes a **zero-knowledge approach** to customer data.

Store, Share, and View

With more than a decade of use and innovation, MIMcloud® is a **secure**, internet-based medical image service that provides an **easily accessible** resource for storing, sharing, and viewing your data. Enhance teleradiology and multi-institution reading operations and utilize MIMcloud as a secure, long-term off-site storage backup.

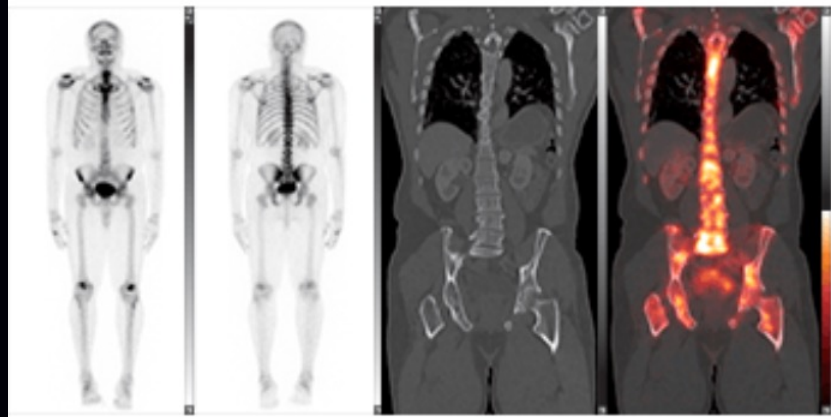
Integrations

MIM Software supports a variety of **plug-in integrations** with many different PACS vendors. MIM Software also provides integration with PowerScribe® 360 to help improve reading efficiency and capture additional diagnostic information beyond conventional reporting templates.



Read from Anywhere

Flexible deployment options are available to support your image access needs with MIM Zero Footprint.



Vendor Neutral

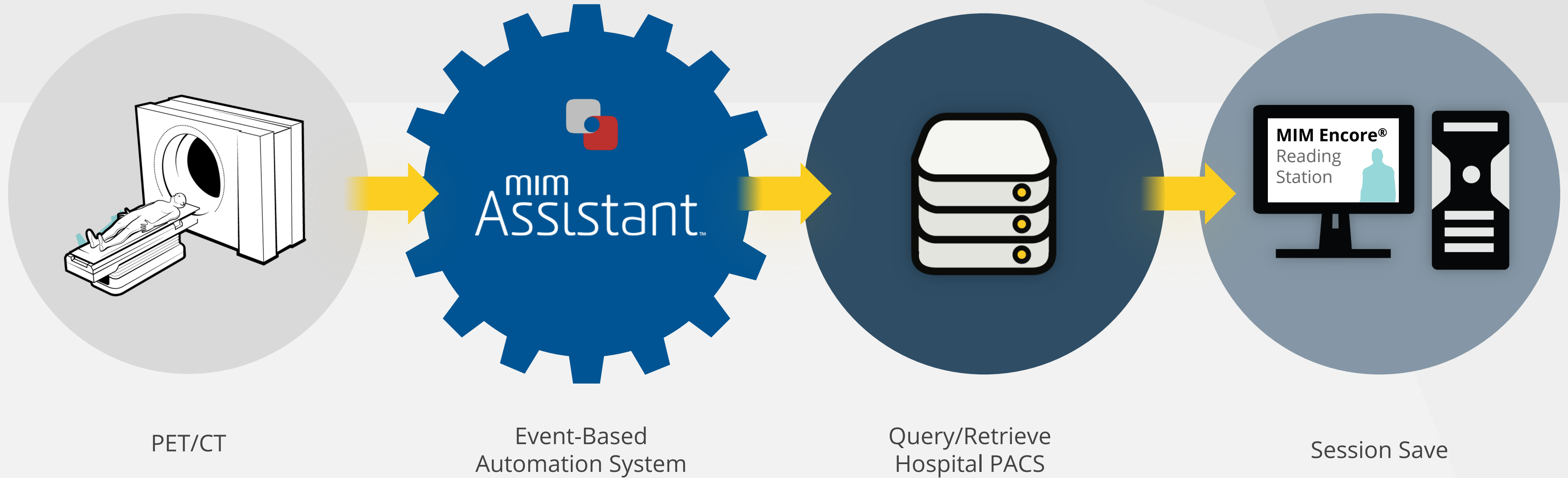
- View and process images from virtually any camera manufacturer.
- Supports all modalities: CT, MR, PET, SPECT, as well as Interventional.

[Read Less](#)

Nuclear Medicine departments are often stuck using outdated workstations with ancient software that are tied to the modality. MIM can be the backbone of your Nuclear Medicine department by providing a common platform for both displaying and processing images from virtually any camera manufacturer make and model.

**MULTIVENDOR
INTEGRACIÓN
COMPLETA CON
TODOS LOS
EQUIPOS PET /
SPECT**

INTEGRACIÓN CON PACS



Auto-Query/Retrieve
Query/Retrieve Hospital PACS

DISTRIBUIDOR OFICIAL EN MÉXICO

Nuclear Medicine World

www.nmwlata.com

Nuclear Medicine World

Cuenta de WhatsApp Business

