



BIENVENIDOS
ESTAMOS LISTOS



SOMOS DISTRIBUIDORES OFICIALES PARA LATINOAMÉRICA



¿QUIÉNES SON?



att
SCINTOMICS

att MÁS DE 15 AÑOS EN RADIOFARMACIA

SCINTOMICS



HISTORY

In 2006, Scintomics GmbH started with the vision of combining functionality and aesthetics with quality and GMP requirements, resulting in the development of a fully automated production system for the manufacture of radiopharmaceuticals, which was produced and distributed by Scintomics GmbH until 2020.

Since then, there has been a steady development of both the fully automated production systems and the company itself.

In order to offer customers a complete service, the company SCINTOMICS Molecular, Applied Theranostics Technologies GmbH (SCI-att) was founded in 2018 with the purpose of distributing the module-related chemicals, intermediates, precursors and other consumables for radiopharmaceutical production.

To combine the module and consumables businesses, the whole module operations such as production and sales were transferred to SCI-att in 2020.

QUALITY POLICY

SCI-att is responsible for the development, production and distribution of automated

components and system-related consumables for the production of radiopharmaceuticals.

SCI-att also distributes starting materials (chemicals, intermediates, precursors and disposable consumables) for the radiopharmaceutical production of radiotracers.

SCI-att stores and transports the starting materials according to GDP guidelines. Products manufactured on behalf of SCI-att are GMP-compliant. In addition, all products are manufactured and distributed in accordance with ethical principles and international standards.

We continuously invest into our facilities and the training of our employees to be ahead of the quality requirements and standards at all times. Furthermore, we guarantee the highest levels of quality and performance to our clients and strive to improve our services to the benefit of our customers and their patients.

CERTIFICATION

SCI-att was successfully audited in November 2022 and received the wholesale license and the GDP certificate by the German authorities.

As part of an annual GDP compliance audit, SCI-att has been certified since 2020 by fulfilling the requirements of the EU Guideline on Good Distribution Practice for Medicinal Products for Human Use (2013/C 343/01) Issue November 05, 2013.

PARTNERS

At SCI-att we are proud of the long lasting partnerships we have developed over the past years and our ambition is to provide all these partners with the highest possible level of service. We treat every single customer with diligence and care, and have the necessary flexibility to adjust our services to your necessities.

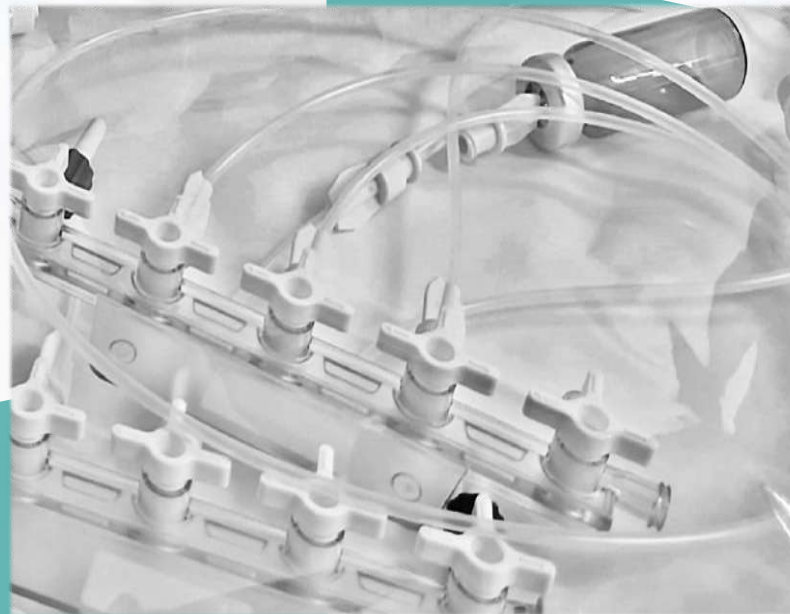
Through our network of distributors and partners we are able to maintain and guarantee the same level of service and care in various countries all around the globe.



MÓDULOS DE
SÍNTESIS:
[68Ga], **[177Lu]**

SETS DE
PRODUCCIÓN:
[68Ga], **[177Lu]**

PRECURSORES:
PSMA,
DOTATATE,
FAPI





MÓDULOS DE SÍNTESIS: [⁶⁸Ga], [¹⁷⁷Lu]





siGRP MODULE

The siGRP module can be used, for example, to produce the following radiopharmaceuticals:

[¹⁸F]siPSMA-14
[¹⁸F]siTATE / [¹⁸F]SiFAlin-TATE

smartGRP MODULE

The smartGRP module can be used to produce the following radiopharmaceuticals: [¹⁸F]siPSMA-14, [¹⁸F]siTATE / [¹⁸F]SiFAlin-TATE, [¹⁷⁷Lu]-Tracer, [⁶⁸Ga]-Tracer (2V)

GRP 3V MODULE

The GRP 3V module can be used, for example, to produce the following radiopharmaceuticals:

[¹⁸F]siPSMA-14,
[¹⁸F]siTATE / [¹⁸F]SiFAlin-TATE
[¹⁷⁷Lu]-Tracer, [⁶⁸Ga]-Tracer (2V),
[⁶⁸Ga]-Tracer (3V) like [⁶⁸Ga]-FAPI, [^{99m}Tc]PSMA
[⁸⁹Zr], [¹⁸F]-NaF, [⁹⁰Y] [¹⁸F]FDG (3V), etc.

The GRP 4V module can be used, to produce the following radiopharmaceuticals:

[¹⁸F]siPSMA-14,
[¹⁸F]siTATE / [¹⁸F]SiFAlin-TATE
[¹⁷⁷Lu]-Tracer, [⁶⁸Ga]-Tracer (2V),
[⁶⁸Ga]-Tracer (3V) like [⁶⁸Ga]-FAPI, [^{99m}Tc]PSMA
[⁸⁹Zr], [¹⁸F]-NaF, [⁹⁰Y]
[¹⁸F]FDG (4V), [¹⁸F]FMISO,
[¹⁸F]FET, [¹⁸F]FLT, [¹⁸F]FMC, etc..

SOFTWARE PARA SÍNTESIS

A comprehensive and powerful innovation environment is indispensable for the method development of new syntheses and subsequent optimization studies.

During the validation phase and routine production however, quick, safe and convenient operation is required.

Upon successful conclusion the pre-validation phase, methods can be exported from the comprehensive ControlCenter development environment into the comfortable and fast to operate GRP Interface software.

This interface only shows what is necessary. In the background all processes are controlled, all parameters are recorded and a complete report of the synthesis is created upon completion.

Exactly what GMP requires.

OUR GRP MODULES ARE A PERFECT COMPANION AND AN OPTIMAL TOOL FOR YOUR
RADIOPHARMACEUTICAL PRODUCTION.



SERVICE

We place the highest value on continuously trained personnel to provide excellent service and maintenance on-site.

Together with our GRP modules we are happy to offer you a wide range of service agreements tailored to your requirements. We also provide you with GDP compliant documentation for our products. Our qualified service technicians will be happy to assist you at any time.

Furthermore we also offer various different training packages both on-site, in house and even online, to make sure you get the most out of your GRP module.

If you have any further questions about SCI-att, our products and service, please do not hesitate to contact us.



CONSUMIBLES PARA
SÍNTESIS:
[⁶⁸Ga], [¹⁷⁷Lu]



Production Set for Synthesis of [68Ga] Peptides using a GRP® Module

Application

The product is designed for the automated radiosynthesis of [68Ga] using a GRP® Module with the 2V method (e.g. [68Ga]PSMA, [68Ga]DOTA).

Components

- Cassette for synthesis of [68Ga] peptides using a GRP® Module
- Consumables for synthesis of [68Ga] peptides using a GRP® Module
- Reagents for [68Ga] peptides using a GRP® Module

Storage Condition

Component-specific according to the specifications:
Storage at < 30°C. Protected from light.

Transport Condition

The shipment of our products fulfills all required regulations. **Stability**

All components are tested for stability by the manufacturer or SCI-att.

Handling Information

For use by qualified personnel only.

The production set is designed for single use with the GRP® Module. The product does not include all components for the manufacturing process of a radiopharmaceutical.

Advantages of our Production Set:

- + Shorter Synthesis time (Synthesis time 2V Production Set: 15 min)
- + High yields up to 70% +/- 5%
- + Perfect fit of the cassette on the GRP® Module, due to the proprietary manifolds
- + Immediate availability of the cassettes
- + Service and availability of SCI-att
- + Small dimensions of the packaging to greatly simplify the sluicing process



Production Set for Synthesis of $[^{177}\text{Lu}]$ Peptides using a GRP® Module

Application

The product is designed for the automated radiosynthesis of $[^{177}\text{Lu}]$ peptides using a GRP® Module (e.g. $[^{177}\text{Lu}]$ PSMA, $[^{177}\text{Lu}]$ DOTA).

Components

- Cassette for synthesis of $[^{177}\text{Lu}]$ peptides using a GRP® Module
- Consumables for synthesis of $[^{177}\text{Lu}]$ peptides using a GRP® Module
- Reagents for $[^{177}\text{Lu}]$ peptides using a GRP® Module

Storage Condition

Component-specific according to the specifications: Storage at $< 30^\circ\text{C}$. Protected from light.

Transport Condition

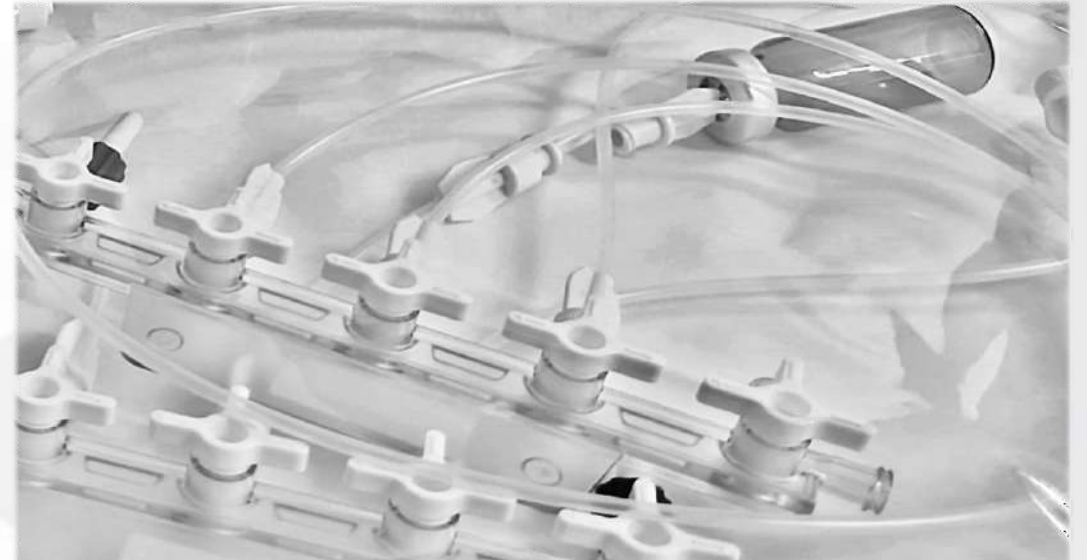
The shipment of our products fulfills all required regulations. **Stability**

All components are tested for stability by the manufacturer or SCI-att.

Handling Information

For use by qualified personnel only.

The production set is designed for single use with the GRP® Module. The product does not include all components for the manufacturing process of a radiopharmaceutical.



Advantages of our Production Set:

- + Permanently extruded connectors, which reduces the number of failed synthesis
- + Required cartridges specially adapted which ensures high product quality
- + Perfect fit of the cassette on the GRP® module, due to the proprietary manifolds
- + Immediate availability of the cassettes
- + Service and availability of SCI-att
- + Small dimensions of the packaging to greatly simplify the slicing process

Cassette for Elution of [⁶⁸Ga] using a GRP® Module

Application

The product is designed for the automated Elution of [⁶⁸Ga]Gallium using a GRP® Module.

Components

- Cassette for Elution of [⁶⁸Ga]Gallium using a GRP® Module

Storage Condition

Storage at < 30°C. Protected from light.

If you have any further questions about SCI-att, our products and service, please do not hesitate to contact us.



Transport Condition

The shipment of our products fulfills all required regulations.

Stability

All components are tested for stability by the manufacturer or SCI-att.

Handling Information

For use by qualified personnel only.

The cassette is designed for single use with the GRP® Module.

The product does not include all components for the manufacturing process of a radiopharmaceutical.

att
SCINTOMICS

PRECURSORES
PSMA,
HA-DOTATATE



SCINTOMICS MOLECULAR,
APPLIED THERANOSTICS TECHNOLOGIES GMBH

PSMA I&T GMP

Product name PSMA I&T (TFA salt) Application

Targeting of the prostate-specific membrane antigen for imaging & therapy. Enantiomerically pure, chemical precursor for radiopharmaceutical preparations with [⁶⁸Ga], [¹⁷⁷Lu] or [²²⁵Ac].

Quality

The product is manufactured according to EU GMP requirements. Specifications

The product specifications comply with Ph. Eur. 2902 Chemical precursors for radiopharmaceutical preparations.

Storage Condition

Storage at -20°C (+/-5°C).
Protected from light.

Transport Condition

The product is shipped according to manufacturer specifications in a controlled and monitored environment at -20°C (+/-5°C).

Stability

The stability of the product is tested in an ongoing stability study by the manufacturer.

PSMA I&T R&D

Product name

PSMA I&T

Application

Labelling precursor for [⁶⁸Ga], [¹⁷⁷Lu] and [²²⁵Ac]. For SPECT/CT imaging and radionuclide therapy of prostate cancer (PCa)[5].

Quality R&D

Grade

Storage Condition

Storage at - 20°C (± 5 °C) sealed storage, away from moisture and protected from light.

Transport Condition

The product is shipped in a controlled and monitored environment at -20°C (+/-5°C).



The following products and fillings are available:

PSMA I&T GMP 250 µg, 1000 µg

PSMA I&T R&D 1000 µg

HA-DOTATATE

Product name

HA-DOTATATE (Acetate salt) / Mannitol, HA-DOTATATE (Acetate salt)

Application

High-affinity DOTATATE for imaging & therapy. Chemical precursor for radiopharmaceutical preparations with [68Ga] or [177Lu].

Quality

The product is manufactured according to EU GMP requirements.

Specifications

The product specifications comply with Ph.Eur. 2902 Chemical precursors for radiopharmaceutical preparations.

Storage Condition

Storage at -20°C (+/-5°C). Protected from light.

Transport Condition

The product is shipped according to manufacturer specifications in a controlled and monitored environment at -20°C (+/-5°C).

Stability

The stability of the product is tested in an ongoing stability study by the manufacturer.

PSMA I&S

Product name

PSMA I&S (Acetate salt) / Mannitol Application

Targeting of the prostate-specific membrane antigen for SPECT imaging & radioguided surgery .

Chemical precursor for radio- pharmaceutical preparations with [99mTc].

Quality

The product is manufactured according to EU GMP requirements.

Specifications

The product specifications comply with Ph. Eur. 2902 Chemical precursors for radiopharmaceutical preparations.

Storage Condition Storage at -20°C

(+/-5°C).

Protected from light.

Transport Condition

The product is shipped according to manufacturer specifications in a

Controlled and monitored environment at -20°C (+/-5°C).

Stability

The stability of the product is tested in an ongoing stability study by the manufacturer.



The following products and fillings are available:

HA-DOTATATE 50 µg, 250 µg

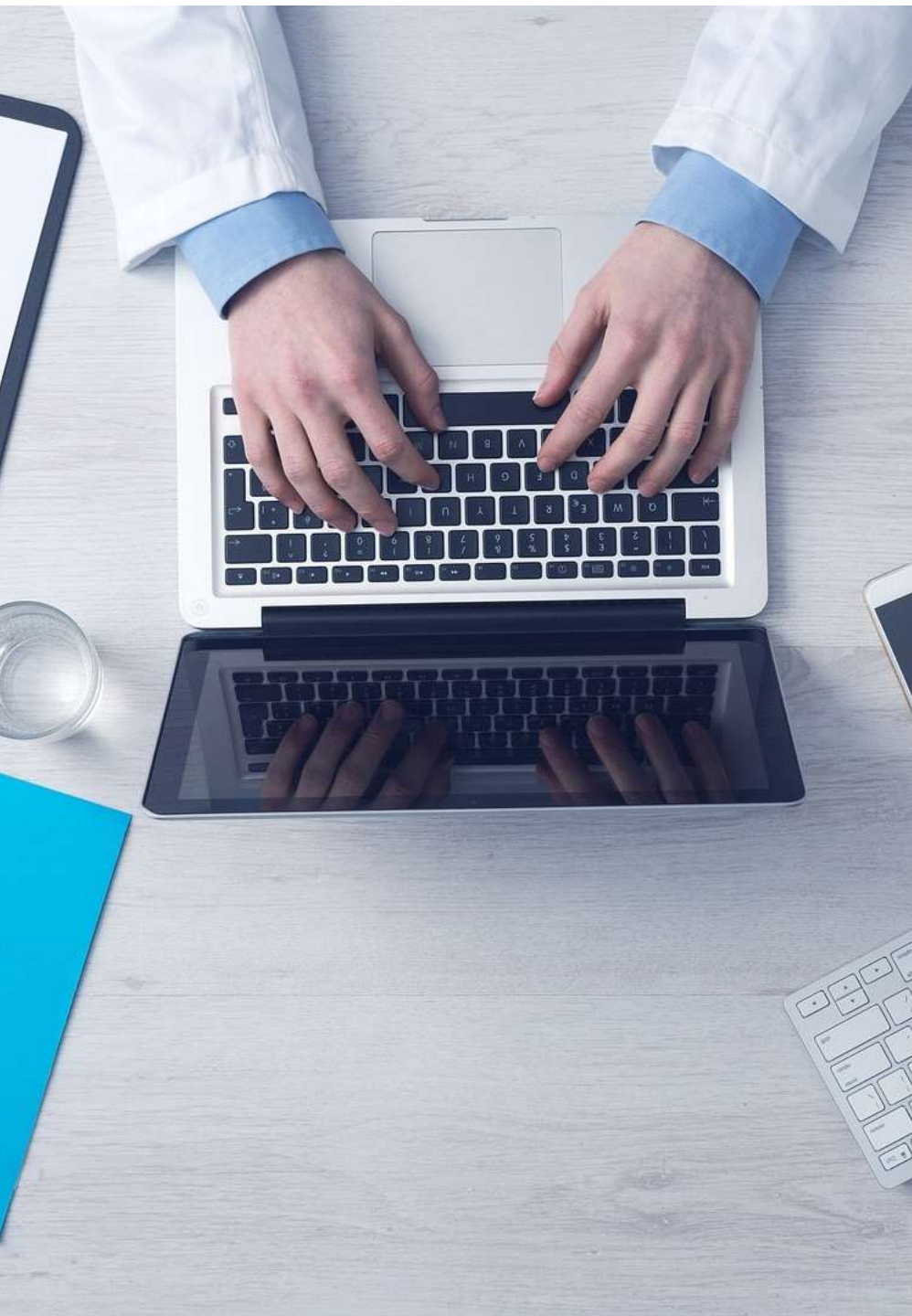
PSMA I&S 40 µg

¿POR QUÉ SCINTOMICS?

UNA SOLUCIÓN INTEGRAL LLAVE EN MANO

- Un solo punto de contacto para todo el requerimiento de marcación con **[68Ga]** y **[177Lu]**
- Disponible en México, Colombia, Ecuador y Perú.
- Incluye asesoramiento para equipamiento, manuales de producción completos y acompañamiento en las primeras producciones.
- Modelo comodato: no pagas por el módulo con la compra de consumibles y precursores.





NUESTRAS OFICINAS

SEDE CENTRAL MÉXICO

Ciudad de México
World Trade Center - Montecito
38, piso 39 of. 34, Col. Nápoles, Del.
Benito Juárez, C.P. 03810AR

+52 55 9000 7519
mexico@nmwlatam.com

SEDE ARGENTINA

Buenos Aires
Marcelo T. de Alvear 2086, Barrio
Norte CABA

argentina@nmwlatam.com

SEDE ECUADOR

Quito
El jardín 168 y 6 de diciembre. Ed.
Century Plaza 1. Piso 9 El Jardín

+593 96 354 6155

ecuador@nmwlatam.com

SEDE COLOMBIA

Bogotá
colombia@nmwlatam.com

www.nmwlatam.com